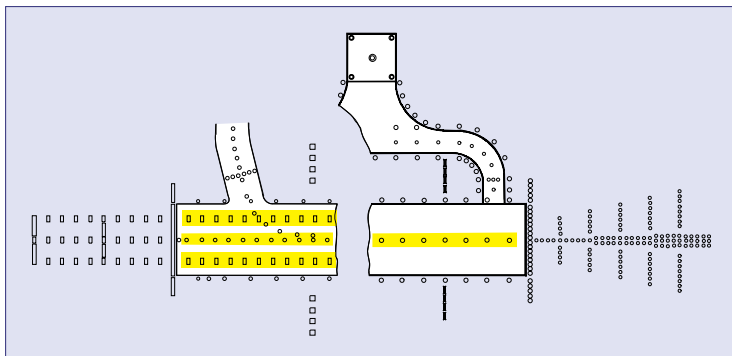


ZA181 Runway Centreline & TDZ



features

- **Lightweight, corrosion resistant and robust aluminium alloy**
- **Dichroic coated lenses for coloured light options**
- **Full range of FAA and PSA adaptors**
- **Long life, low energy lamps (1500 hrs/49W at full brilliancy) - 1 or 2 off per fitting**
- **Pre-focused optics simplify maintenance procedures**
- **Light channel within 5mm from Grade**
- **Two point fixing into mounting adaptor/seating pot for faster installation and removal of light cartridge**
- **Low profile (12mm) to reduce possibility of damage to aircraft and vehicle tyres**
- **Twin-lead, bi-directional (switchable) versions available**
- **Prisms accurately located and secured in the body casting without the need for sealing compound**
- **Optional lamp by-pass devices**
- **Powder coat paint finish in golden yellow or NATO green. All fasteners are stainless steel**
- **IMM available on request**

compliance with standards

- **FAA** In compliance with FAA L-850A & B, specifications AC 150/5345-46C
- **ICAO** In compliance with ICAO Annex 14, figs 2.5, 2.6 & 2.7
- **NATO** In compliance with STANAG 3316
- **CAA** CAP168, figs 6A/5, 6A/6 & 6A/7
- **BS3224** Part 5, inset fittings

application

Runway centreline or touchdown zone fitting for use in category I, II & III all weather operation airfield lighting systems.

options

- ZM181 8" seating pot (wet)
- ZM181 8" seating pot (dry)
- BS 12" adaptor flange
- ZS023 sighting device
- Extractor tool
- ZM181 installation jig

electrical supply

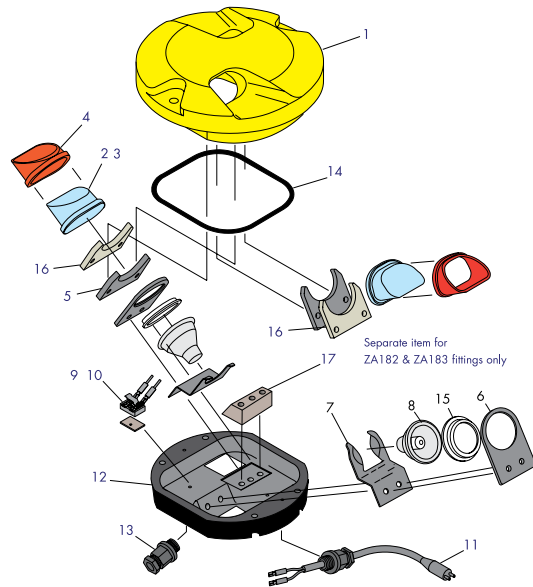
Suitable for use in 6.6A airfield lighting circuits, normally supplied from one 100W/150W or two 45W/65W series circuit isolating transformers.

packaging data

Net weight	5kg
Gross weight	6kg
Carton size	220mm(w) x 220mm(d) x 126mm(h)

components

1	Body casting anodised grey or golden yellow	Not saleable
2	Clear prism (1 or 2) or red dichroic prism	SLC16069 SLC19141
3	Blank for prism aperture	SLC40092
4	Prism gasket (2)	SLC33058
5	Prism retaining clamp (2)	SLC32037
6	Lampholder (1 or 2)	SLC32040
7	Lamp retaining spring (1 or 2)	SLC32039
8	Cold reflector lamp - 45/49W 6.6A (1 or 2)	SLC08065
9	Lamp by-pass disc assembly (1 or 2)	DRG28848
10	45W by-pass disc (1 or 2)	SLC21134
11	'B' type plug lead (1 or 2)	SLC13001
12	Base casting (single lead) or base casting (twin lead)	Not saleable
13	Cable gland assembly (1 or 2)	SLC21114/5/6
14	'O' ring seal	SLC33059
15	Lamp gasket	SLC33064
16	Prism clamp gasket	SLC33069
17	Lamp holder support	SLC21296

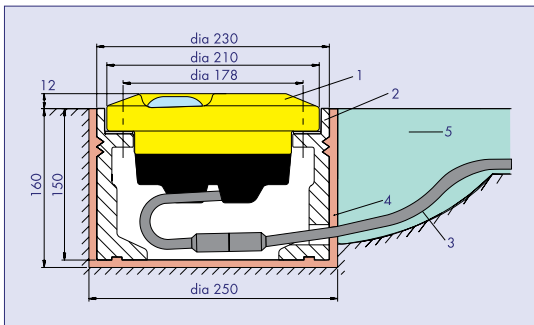


typical installation methods

In 8" dia seating pot atg airports Type ZM181

Adaptor rings (3BS or 4BS) enable the fitting to be mounted into new or existing standard PSA 12" and 15.5" dia seating rings

ZA181 installed in ZM181 seating pot (dry)



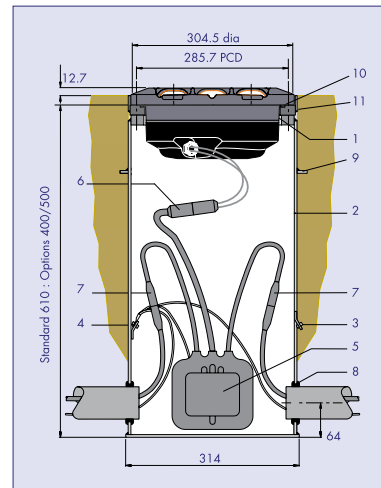
Wet seating pot arrangements information available on request

- | | |
|----------------------|-------------|
| 1. ZA181 fitting | 4. Grout |
| 2. ZM181 seating pot | 5. Slotseal |
| 3. Secondary lead | |

In FAA 12" dia L-868 base

Installation on to FAA L-868 seating base can be achieved by using an 8 -12" adaptor ring (3FA, 3FR or 3FL).

ZA181 Installed on FAA L-868 Base



- | | |
|------------------------------------|-----------------------|
| 1. ZA181 Fitting (F28828) | 7. Primary connection |
| 2. FAA L-868 Base (one piece) | 8. Grommet |
| 3. Outer earth terminal (optional) | 9. Anchor ring |
| 4. Inner earth terminal (optional) | 10. 'O' Ring |
| 5. Isolating transformer | 11. Dam ring |
| 6. Secondary connection | |

General arrangement

