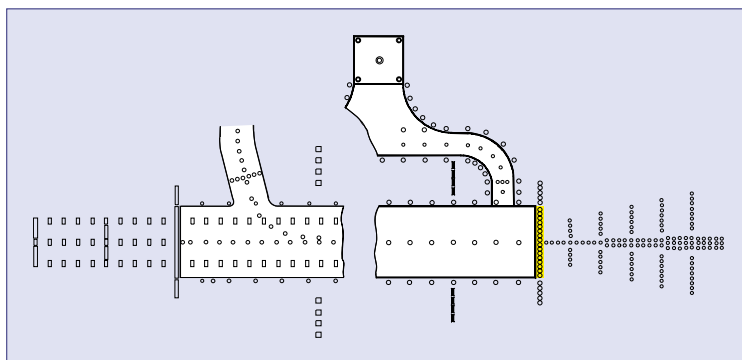


# ZA182 Runway End

high intensity uni-directional inset light



## features

- **Lightweight and robust due to its aluminium alloy construction which also gives good corrosion resistance.**
- **Red dichroically coated lens.**
- **Full range of FAA and PSA adaptors available.**
- **Long life, low energy lamps (1500 hrs/105W 6.6A at full brilliancy) - 1 off per fitting.**
- **Pre-focused optics simplify maintenance procedures.**
- **Light channel within 5mm from Grade.**
- **Two point fixing into mounting adaptor/seating pot for faster installation and removal of light fitting.**
- **Low profile (12mm) to reduce possibility of damage to aircraft and vehicle tyres.**
- **Prism accurately located and secured in the body casting without the need for sealing compound to facilitate removal and replacement**
- **Powder coat paint finish in golden yellow or anodised aluminium**
- **All fasteners are stainless steel**
- **IMM available on request**

## compliance with standards

- **FAA** AC 150/5345-46C/L-850D
- **ICAO** Annex 14 3rd Edition, fig 2.8
- **NATO** STANAG 3316
- **CAA** CAP168, fig 6A/8 BS3224: Part 5, inset fittings

## application

Runway end fitting for use in category I, II & III all weather operation airfield lighting systems.

## options

- ZM181 8" seating pot (wet)
- ZM181 8" seating pot (dry)
- BS 12" adaptor flange
- BS 15.5" adaptor flange
- FAA 12" axial adaptor flange
- ZS023 sighting device
- Extractor tool
- ZM181 installation jig

## electrical supply

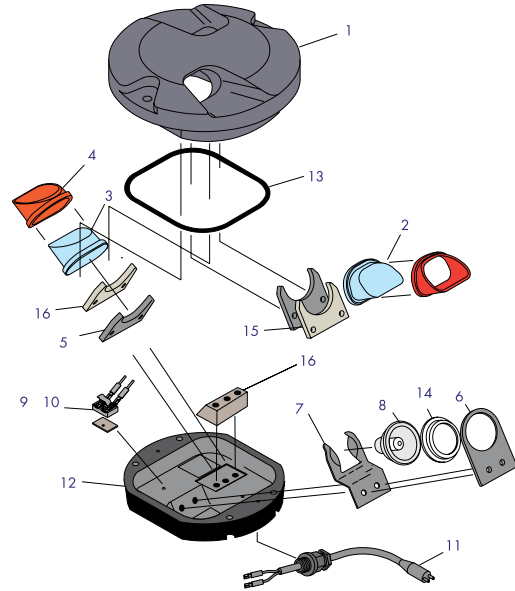
Suitable for use in 6.6A airfield lighting circuits, normally supplied from one 100W isolating transformer.

## packaging data

<b>Net weight</b>	5kg
<b>Gross weight</b>	6kg
<b>Carton size</b>	220mm(w) x 220mm(d) x 126mm(h)

## components

1	Body casting golden yellow	SLC16069
2	Red prism	SLC19141
3	Blank for prism aperture	SLC40092
4	Prism gasket (2)	SLC33075
5	Prism retaining clamp (2)	SLC32037
6	Lampholder	SLC32040
7	Lamp retaining spring	SLC32039
8	Cold reflector lamp - 105W 6.6A	SLC08075
9	Lamp by-pass disc assembly optional	SLC21135
10	100W by-pass disc optional	SLC21135
11	'B' type plug lead	SLC13026
12	Base casting single lead	Not saleable
13	Sealing gasket	SLC33070
14	Lamp gasket	SLC33083
15	Prism clamp gasket	SLC33069
16	Lampholder support block	SLC21296



## typical installation methods

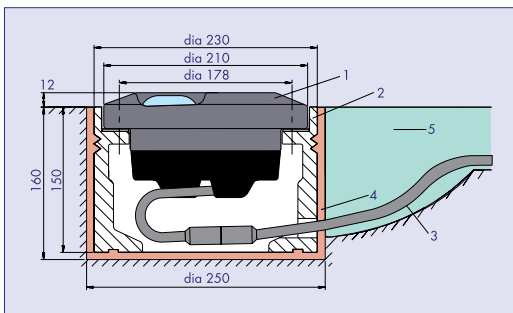
### • In 8" dia seating pot

atg airports type ZM181 Adaptor rings (3BS or 4BS) enable the fitting to be mounted into new or existing standard PSA 12" and 15.5" dia seating rings.

### • In FAA 12" dia L-868 base

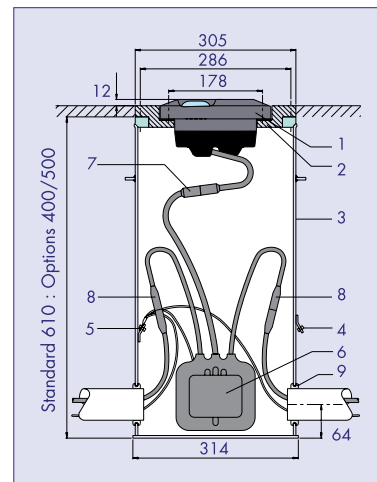
Installation on to FAA L-868 seating base can be achieved by using an 8-12" adaptor ring (3FA, 3FR or 3FL).

ZA182 installed in ZM181 seating pot (dry)



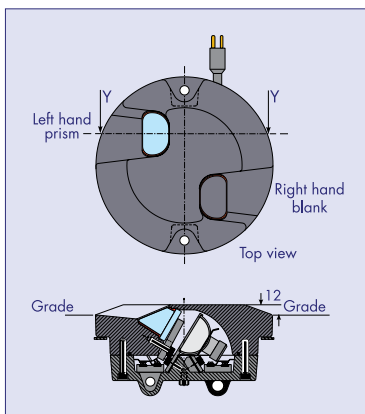
- |                      |             |
|----------------------|-------------|
| 1. ZA182 fitting     | 4. Grout    |
| 2. ZM181 seating pot | 5. Slotseal |
| 3. Secondary lead    |             |

ZA182 installed on FAA L-868 base



- |                                    |                          |
|------------------------------------|--------------------------|
| 1. ZA182 fitting                   | 6. Isolating transformer |
| 2. Mounting adaptor - axial        | 7. Secondary connection  |
| 3. FAA L-868 base (one piece)      | 8. Primary connection    |
| 4. Outer earth terminal (optional) | 9. Grommet               |
| 5. Inner earth terminal (optional) |                          |

### General Arrangement



# photometric performance

## Runway End

Red	ZA182
Main Ellipse Intensity Measurements (Candelas)	
Average	3443
Min. Average	2500
Max (B)	4399
Min (A)	2566

## Nominal Lamp Details

Power	105.0 Watts
Current	6.6 Amps
Type	Cold reflector lamp
ICAO	CAP168
ANNEX 14	FIG6A/8
FIG 2.8	

