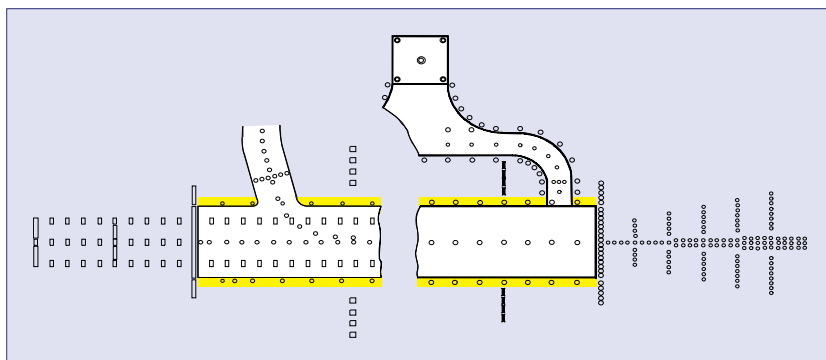


ZA183 Runway Edge

high intensity bi-directional inset light



features

- **Lightweight and robust due to its aluminium alloy construction which also gives good corrosion resistance**
- **Designed to be mounted in 12" or 15.5" adaptor flange**
- **Full range of FAA and PSA adaptors available**
- **Long life, low energy lamps (1500 hrs/105W 6.6A at full brilliancy), 2 off per fitting**
- **Pre-focused optics simplify maintenance procedures**
- **Light channel within 5mm from Grade**
- **Two point fixing into mounting adaptor for faster installation and removal of light fitting**
- **Low profile (12mm) to reduce possibility of damage to aircraft and vehicle tyres**
- **Prisms accurately located and secured in the body casting without the need for sealing compound to facilitate removal and replacement**
- **Powder coat paint finish in golden yellow or anodised aluminium. All fasteners are stainless steel**
- **IMM available on request**

compliance with standards

- **FAA** In compliance with FAA L-850C, specifications AC 150/5345-46C
- **ICAO** In compliance with ICAO Annex 14 3rd Edition, figs 2.9 & 2.10
- **NATO** In compliance with STANAG 3316
- **CAA** CAP168, figs 6A/9 & 6A/10
- **BS3224** Part 5, inset fittings

application

Runway edge fitting for use in category I, II & III all weather operation airfield lighting systems.

options

- ZM110 12" seating pot
- BS 12" adaptor flange
- BS 15.5" adaptor flange
- ZM480 12" seating pot
- FAA 12" axial adaptor flange (dry)
- FAA 12" axial adaptor flange (wet)
- ZS023 sighting device
- Extractor tool
- ZM480 installation jig

electrical supply

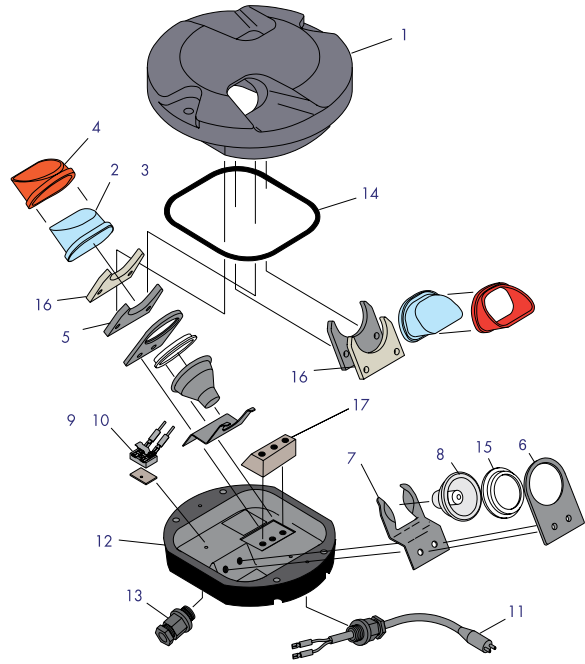
Suitable for use in 6.6A airfield lighting circuits, normally supplied from either one 200W or two 100W isolating transformers.

packing data

Net weight	5kg
Gross weight	6kg
Carton size	220mm(w) x 220mm(d) x 126mm(h)

components

1	Body casting golden yellow or anodised aluminium	Not saleable
2	Clear prism (1 or 2) or Red prism or Yellow prism or Green prism	SLC16069 SLC19141 SLC19153 SLC19154
3	Blank for prism aperture	SLC40092
4	Prism gasket (2)	SLC33075
5	Prism retaining clamp (2)	SLC32037
6	Lampholder (2)	SLC32040
7	Lamp retaining spring (2)	SLC32039
8	Cold reflector lamp - 105W 6.6A (2)	SLC08075
9	Lamp by-pass disc assembly (1 or 2) optional	DRG28848C
10	100W by-pass disc (1 or 2) optional	SLC21135
11	'B' type plug lead (1 or 2)	SLC13026
12	Base casting single lead or twin lead	Not saleable Not saleable
13	Cable gland assembly (1 or 2)	SLC21282/3/4
14	Sealing gasket	SLC33070
15	Lamp gasket (2)	SLC33083
16	Prism clamp gasket (2)	SLC33069
17	Lampholder support block (2)	SLC21296

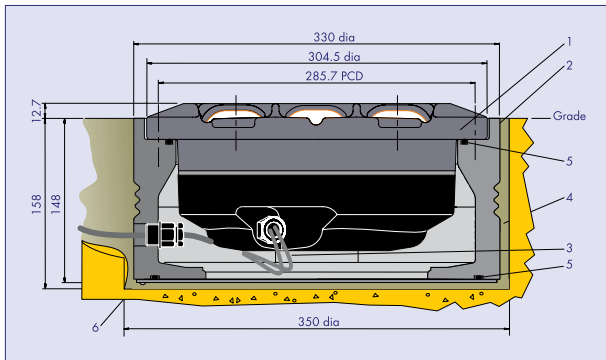


typical installation methods

• In 12" dia seating pot atg airports type ZM110

Adaptor rings (3BS or 4BS) enable the fitting to be mounted into new or existing standard PSA 12" and 15.5" dia seating rings.

ZA480 Installed in ZM480 Seating Pot (dry version)



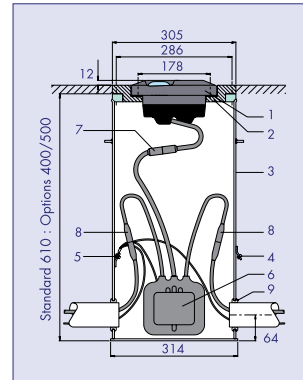
- | | |
|-------------------------|----------------|
| 1. ZA480 Fitting | 4. Grout |
| 2. ZM480 Seating Pot | 5. 'O' Ring |
| 3. Secondary Connection | 6. Cable Gland |

Note ZM480 Wet seating pot arrangement information available on request.

• In FAA 12" dia L-868 base

Installation on to FAA L- 868 seating base can be achieved by using an 8 -12" adaptor ring (3FA, 3FR or 3FL).

ZA183 installed on FAA L-868 base



General arrangement

